



43 Buttercup Road

Desborough, NN14 2GY



Simpson Ellson

Set within the sought-after Grange Development on the northern side of Desborough, this impressive four-bedroom detached home combines space, practicality, and modern styling, making it an excellent choice for family living.

Constructed by David Wilson Homes and occupying a generous plot, the property enjoys a convenient position within easy reach of local shops, schools, and everyday amenities. For commuters, both Kettering and Market Harborough train stations are just a short drive away, offering strong transport links.

Inside, the layout has been thoughtfully designed to suit modern lifestyles. A bright, bay-fronted lounge sits to the front of the property, while to the rear, a well-equipped kitchen with integrated appliances opens into a comfortable breakfast/snug area. French doors provide direct access to the garden, creating a seamless indoor-outdoor feel. Additional ground floor features include a downstairs W/C, a handy utility cupboard, and access into the garage.

Upstairs, there are four generously sized bedrooms, including a main bedroom with its own en-suite shower room, alongside a well-appointed family bathroom. The property has been maintained to a high standard throughout, offering a move-in ready finish.

Externally, the front provides off-road parking via a driveway leading to the single garage, complemented by a neat shrub frontage. The rear garden is both spacious and easy to maintain, featuring a patio seating area, raised decking, and lawn—ideal for relaxing or entertaining.

A well-located and well-presented home that offers both comfort and convenience—viewing is highly recommended.

£375,000



4

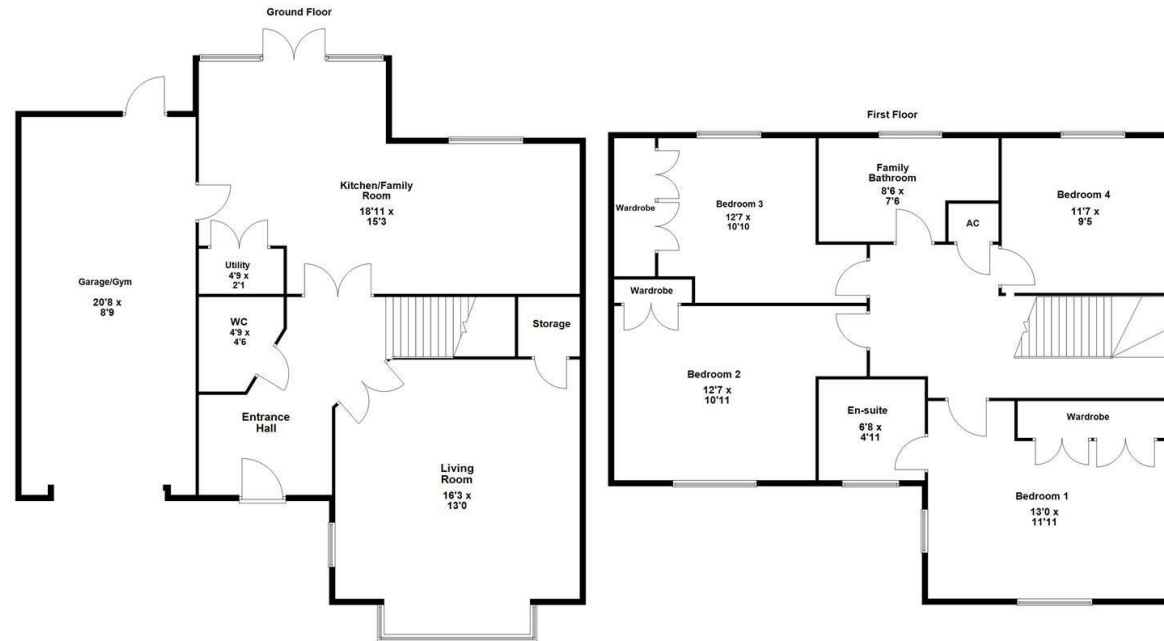


2



2





Energy Efficiency Rating		
	Current	Potential
Very energy efficient - lower running costs		
(92 plus) A		
(81-91) B		
(69-80) C		
(55-68) D		
(39-54) E		
(21-38) F		
(1-20) G		
Not energy efficient - higher running costs		
England & Wales	EU Directive 2002/91/EC	





**Simpson
Ellson**

T: 01536 645960
E: rothwell@simpsonellson.co.uk



01536 645960
rothwell@simpsonellson.co.uk
<https://www.simpsonellson.co.uk>

32 High Street, Rothwell, Northants, NN14 6BQ